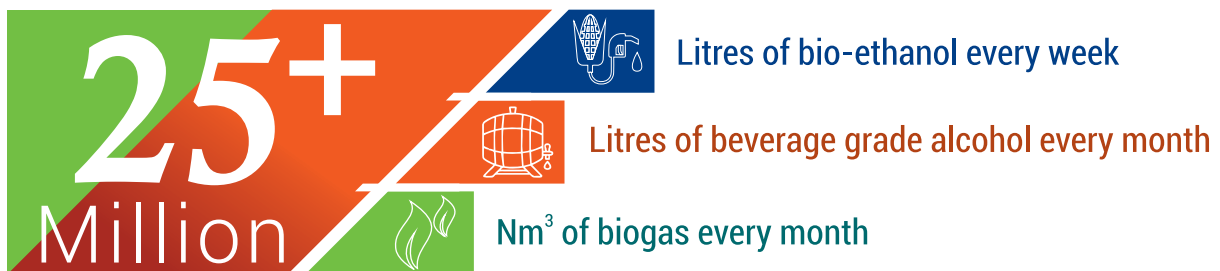


25 Glorious Years of Technology-led Leadership in Asia Pacific



are produced from Praj plants in South East Asia

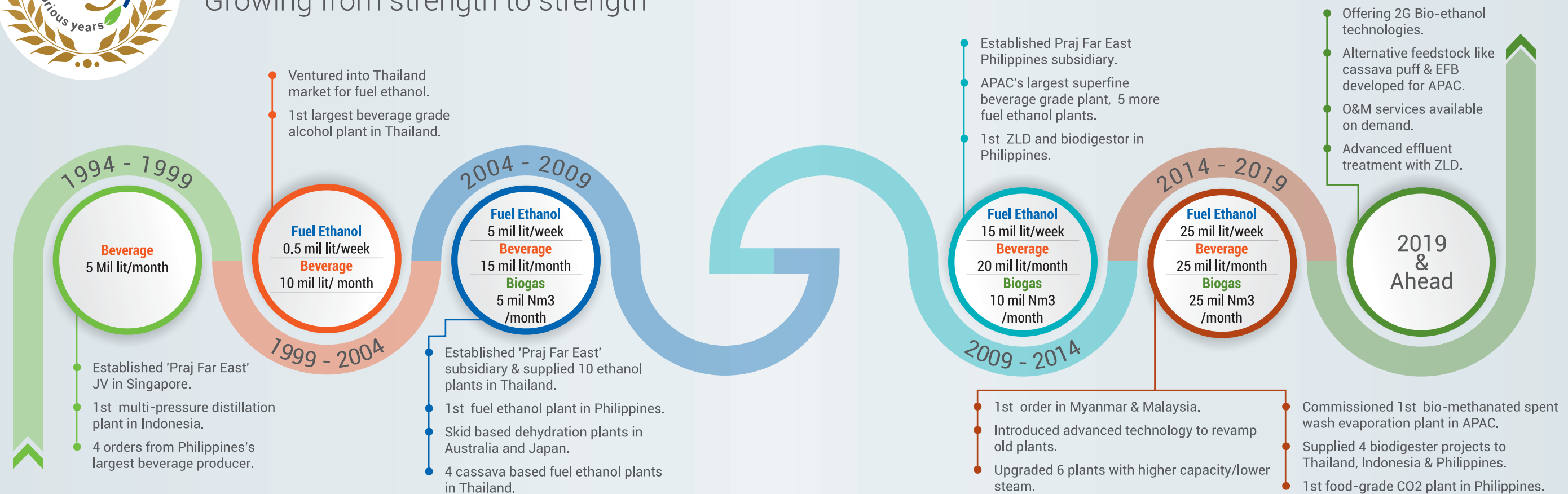
Praj Industries offers innovative technology and integration solutions to ethanol facilities, brewery plants, water and wastewater treatment systems, critical process equipment and skids, compressed biogas plants, high purity solutions and bioproducts. With over 750 references across 75 countries, it is backed by a state-of-the-art R&D Centre called Matrix.

Praj ventured into the SEA market in 1994 offering multi pressure distillation plants and bagging orders for large beverage producers in Indonesia and the Philippines. Since then it has expanded its territory and provides end-to-end solutions across the APAC region including Myanmar, Malaysia, Thailand, Australia and Japan.





Growing from strength to strength



ETHANOL WORKSHOP AND ALCOHOL MASTERCLASS

A Praj initiative for Industry Interaction



An Alcohol MasterClass was held in Bangkok in 2015 & 2018, and ethanol workshop was held in Indonesia in 2018 for over 200 delegates.

Praj conducts conferences and technical programs for the industry to build a prosperous and level playing field, while building awareness about fuel ethanol, biorefineries, etc.

Comprehensive solutions for the global ethanol industry

Comprehensive solutions
New technologies for enhancing performance of existing facilities : Yield Maximization; Co-Product Generation; Reduction and Equipment Retrofit.

HIFERM[®]
Fermentation Plants

ECOFINE[®]
Distillation Plants

ECOMOL[™]
Molecular Sieve Plants

Ecovap[™]
Evaporation plants

EcoPure[™]
CO₂ Recovery

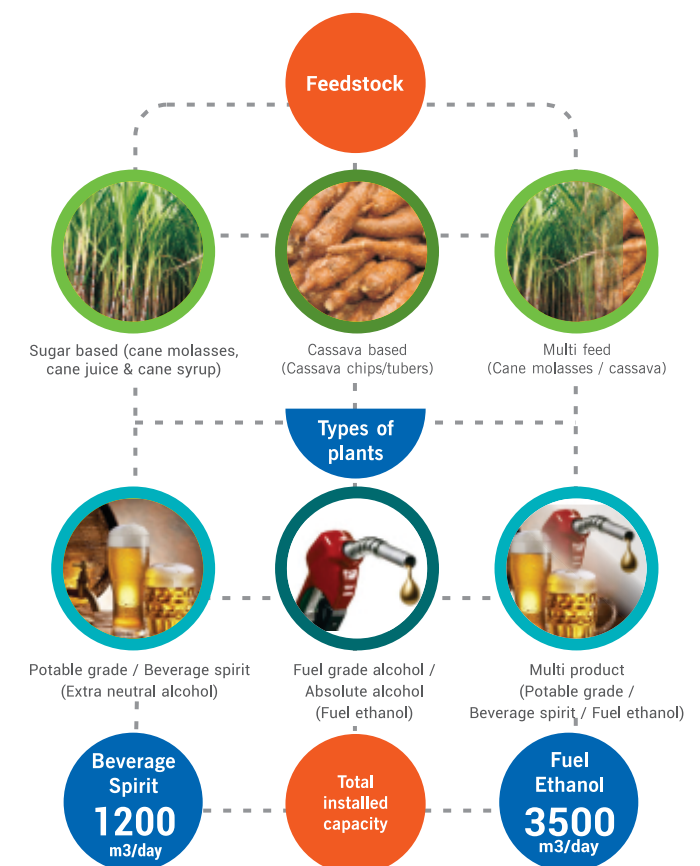
EcoSmart[™]
Smart Distillation

EcoClean[™]
Biogas Cleaning

enfinity
Biomass to Ethanol Technology

ECOMET-XT[™]
Biomethanation

RenGas
Renewable Natural Gas





References in Asia Pacific



THAILAND

- Thai Alcohol Public Co., Ltd. 1 project
- KSL Green Innovation Public Co., Ltd. 7 projects
- Thai Sugar Ethanol Co., Ltd. 2 projects
- Sapthip Co., Ltd. 1 project
- Bangchak Bioethanol (Chachoengsao) Co., Ltd. 1 project
- E85 Co., Ltd. 1 project
- KI Ethanol Co., Ltd. 3 projects
- P.S.C. Starch Products Public Co., Ltd. 1 project
- Thai Roong Ruang Energy Co., Ltd. 2 projects
- Thai San Miguel Co., Ltd. 1 project
- Tawandang 1999 Co., Ltd. 2 projects



JAPAN

- TSK 1 project
- TFB projects (Marubeni) 1 project



PHILIPPINES

- Ginebra San Miguel Inc. 4 projects
- Emperador Distillers, Inc. 5 projects
- Leyte Agri Corporation 1 project
- Absolut Distillers Inc. 3 projects
- Green Future Innovation Inc. 1 project
- Universal Robina Corporation 1 project
- Kooli Company, Inc. 2 projects
- Victorias Milling Company Inc. 1 project
- San Carlos Bioenergy Inc. 2 projects



AUSTRALIA

- Wilmar Ethanol Australia 2 projects



MYANMAR

- Red Canal Trading 1 project
- Asia Beverage Co Ltd., 1 project
- Kyar Min Gyi Co. Ltd., 1 project



VIETNAM

- Hanoi Liquor Joint Stock Co Ltd., (Halico) 1 project
- Orient Biofules Co. Ltd., 1 project



INDONESIA

- PT Molindo Raya Industrial 1 project
- PT Medco Energi 1 project
- PT Indo Lampung Distillery 2 projects
- PT Energi Agro Nusantara 3 projects



CAMBODIA

- Kamdhenu Ventures (Cambodia) Ltd., 1 project
- MH Bio/ KOLON Engineering 1 project



| Ethanol Plants | Brewery Plants | High Purity Water Systems | Bio-Nutrients
| Process Equipment & Skids | Water & Wastewater Systems

Praj Worldwide

India | Philippines | Thailand | USA



Innovate • Integrate • Deliver

Praj Industries Limited,
Praj Tower, 274 & 275,
Bhumkar Chowk-Hinjewadi Road,
Hinjewadi, Pune-411057. INDIA
E : info@praj.net | Website : www.praj.net

Thailand :

Praj Far East Co. Ltd. 15, Sukhumvit Soi 31,
Sukhumvit Road, Klongtoey Nua, Wattana,
Bangkok 10110, Thailand.
Tel : +66-2-6623177 / 8 Fax : +66-2-6623179

Contact : Yotsapark Ruangrat : yotsapark@prajfareast.com, Atul Joshi : atuljoshi@praj.net

Disclaimer : The information in this leaflet is given in good faith but without warranty. Performance and design parameters will vary on case to case basis and will depend on the requirement of the specific case. Typical values in leaflet should not be considered as specifications.